

Essex Wildlife Trust

Grounds Development



Maximise your natural outdoor learning spaces for wildlife and learning. We will involve pupils and staff from the start to finish in the practical and planning stages of your project.

Please see below for details:

Wildlife areas See here for details	Ponds See here for details
Orchard & apple days See here for details	Living willow structures See here for details
Sensory gardens See here for details	Forest School Sites See here for details
Invertebrate habitats See here for details	Hedgerows and trees See here for details

For prices [See here for details](#)

For bookings or further information contact:

Outdoor Learning Manager: learnoutdoors@essexwt.org.uk 01621862992



Wildlife areas



Skills	IT, mapping & keys, art & sculpture, safe use of tools, DT, identification & classification, habitats, ecosystems, wildlife, life cycles, collaboration, plants & growing, adaptation & evolution, food chains.
Session outlines	Choose from the following series of projects:
Planning (half day/ day)	<p>Improve the grounds for biodiversity and fieldwork opportunities; designed and constructed with pupils:</p> <ul style="list-style-type: none"> • Work with students to identify existing species and ecosystems • Make a site plan of existing areas and draw up a management plan for the site
Creating wildlife habitats (half a day/day)	<p>Use hand tools to put the plan into practice and create new wildlife habitats e.g. living willow structures, orchards, pond, invertebrate habitats, hedgerow, wildflower meadow, sensory garden, wildlife borders.</p> <p>For bug hotel, habitat logs, stag beetle pyramid and nectar border see here for details.</p>
Managing and rejuvenating existing areas (half a day/day)	Use hand tools safely to cut and clear and prune and tidy your overgrown wildlife area to bring it back into shape as a useful learning resource.

For prices [See here for details](#)

For bookings or further information contact:

Outdoor Learning Manager: learnoutdoors@essexwt.org.uk 01621862992

[See here](#) to return to grounds development menu



Sensory Gardens



Skills	Fine motor skills, safe use of tools & equipment, maths, exploring senses, living things, life cycles, identification & classification, food chains, care & consideration for living things and ecosystems.
Session outlines	Choose from the following series of projects:
Planning (half day/ day)	<p>Improve the grounds to allow sensory activities for the children ; designed and constructed with children and teachers:</p> <ul style="list-style-type: none"> • Work with students to identify suitable sensory plants for the site and soil • Discuss how each senses could be used in the space • Make a site plan of existing areas and draw up a development
Creating a sensory garden (half a day/day)	With students, use hand tools to put the plan into practice and plant up the garden, placing right plants in the right place and feeding and watering them to give them a good start. We will leave you with a plan to help you look after your garden.



For prices [See here for details](#)

For bookings or further information contact:

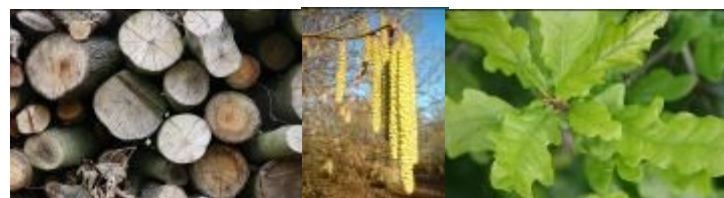
Outdoor Learning Manager: learnoutdoors@essexwt.org.uk 01621862992

[See here](#) to return to grounds development menu

Developing a Forest School site



Skills	Gross motor skills, safe use of tools & equipment, maths, exploring senses, living things, life cycles, identification & classification, food chains, care & consideration for living things and ecosystems.
Session outlines	Choose from the following series of projects:
Planning (half day/ day)	<p>Improve the grounds to maximise your space for Forest School ; designed and constructed with children and teachers:</p> <ul style="list-style-type: none"> • Work with students to study the woodland layers, identify existing species and identify those useful for Forest School. • Find the best site for a different areas e.g. log circle, fire pit • Make a site plan of existing areas and draw up a development
Improving a site for Forest School. (half a day/day)	<p>With students, use hand tools to put the plan into practice:</p> <ul style="list-style-type: none"> • Plant up useful shrubs and trees for a Forest School site: • Introduce new habitats such as bird boxes , bat boxes and bug logs • Make a log circle and fire area. • Clear some scrub areas where required.



For prices [See here for details](#)

For bookings or further information contact:

Outdoor Learning Manager: learnoutdoors@essexwt.org.uk 01621862992

[See here](#) to return to grounds development menu

Invertebrate habitats



Skills	Strength, gross motor skills, fine motor skills, DT, safe use of tools, art & sculpture, identification & classification, habitats, ecosystems, wildlife, life cycles, collaboration, plants & growing, evolution & adaptation, care & consideration for living things and seasons.
Session outlines	Choose from the following series of projects:
Bug hotel (half a day)	Using pallets and a variety of materials, create magnificent five star high rise hotels for the local minibeast. (one class in two groups)
Habitat logs (half a day)	Lay logs for rolling and make log piles to increase the valuable dead wood habitat at your site for a multitude of bugs and create a learning resource too. (one class in two groups)
Stag beetle pyramid (half a day)	Insert a variety of long stag beetle friendly logs to create a nursery for stag beetle larvae. (one class in two groups)
Nectar border (half a day)	Plant a variety of specific flowering plants to provide a rich nectar source for insects from early spring to late autumn. SPRING/ AUTUMN ACTIVITY



For prices [See here for details](#)

For bookings and further information contact:

Outdoor Learning Manager: learnoutdoors@essexwt.org.uk 01621862992

[See here](#) to return to grounds development menu

Ponds



Skills	Strength, gross motor skills, fine motor skills, safe use of tools, maths, DT, soils and rocks, plants & growing , collaboration, problem solving, living things, life cycles, identification & classification, food chains, care & consideration for living things, ecosystems, eutrophication, decay & nutrient cycle.
Session outlines	Choose from the following series of projects:
Pond creation (half day to start)	Planning with pupils and, once the pond is dug out, lining and edging and filling the pond. (carried out in stages)
Pond clearing (half day/ day)	Pupils/adults/ sometimes two Outdoor Learning Officers required to clear out weed from overgrown ponds and clear foliage and branches overhanging the pond to let the light back in and keep leaves out. (up to one day, depending on state of pond and number and strength of helpers) Autumn/ winter activity
Pond planting (1/1.5 hours)	Plant a range of aquatic plants to create a healthy balance pond.



For prices [See here for details](#)

If you are interested or need further information contact:

Outdoor Learning Manager: learnoutdoors@essexwt.org.uk 01621862992

[See here](#) to return to grounds development menu

Hedgerows and trees



Skills	Strength, gross motor skills, fine motor skills, safe use of tools, soils & rocks, plants & growing, collaboration, problem solving, living things, life cycles, identification & classification, food chains, care & consideration for living things, ecosystems, evolution & adaptation, photosynthesis, decay & nutrient cycle.
Session outlines	Choose from the following series of projects:
Planting (half day/ day)	Plant trees and shrubs with pupils and include rabbit guards, ties and weed suppressant to create a woodland area or hedgerow. Water and feed and find out how to manage the area in the long term.



For prices [See here for details](#)

If you are interested or need further information contact:

Outdoor Learning Manager: learnoutdoors@essexwt.org.uk 01621862992

[See here](#) to return to grounds development menu

Living willow structures



Winter activity

These provide shade, sculpture, boundary lines and an endless supply of willow rods for use in Forest School and Outdoor learning sessions to make wreaths, crowns, cooking sticks or more willow structures...

Skills	Strength, gross motor skills, fine motor skills, safe use of tools, art & sculpture, weaving, maths, DT, soils & rocks, propagation, plants & growing, collaboration and problem solving. NB extra cost for willow
Session outlines	Choose from the following series of projects:
Willow tunnel (half day/ day)	We work with students in groups of 12 for a minimum of 1hr each group to plant and weave and tie a living willow tunnel. (half a day- a day depending on length of tunnel and £30 per m for willow and ties and weed suppressant)
Willow dome (one day)	We work with students in groups of 12 for a minimum of 1hr each group to plant and weave and tie a living willow dome approx. 3.5m diameter. (a day, 30 students max and extra £130 for willow and ties and weed suppressant)
Willow 'fedge' (half a day/day)	We work with students in groups of 12 for a minimum of 1hr each group to plant and weave and tie a living willow hedge or fence into a lattice. (half a day- a day depending on length of fedge and £20 per meter for willow and ties and weed suppressant)
Maintaining an existing willow structure (half a day/day)	We work alone or with students in groups of 12 for a minimum of 1hr each group to prune and weave your willow structure to bring it back. We can also take away lots of the cuttings. (half a day- a day depending on the state of the structure)

For prices [See here for details](#)

If you are interested or need further information contact:
 Outdoor Learning Manager: learnoutdoors@essexwt.org.uk 01621862992

[See here](#) to return to grounds development menu

Orchards and apple days



Autumn/winter activities.

An orchard is a wildlife rich habitat that is traditional to Essex.

Skills	Strength, gross motor skills, fine motor skills, safe use of tools, art & sculpture, weaving, maths, DT, soils & rocks, propagation, plants & growing, collaboration, problem solving, history, traditions and customs
Planting (half day/ one day)	We work with students to plant trees. Five apple trees make an orchard. (half a day- a day depending on the number of trees planted). Water and feed and protect to ensure trees have all they need to thrive and learn how to manage the site.



For prices [See here for details](#)

If you are interested or need further information contact:
 Outdoor Learning Manager: learnoutdoors@essexwt.org.uk 01621862992

[See here](#) to return to grounds development menu



Your Day

We offer Outdoor Learning sessions across the year to enrich the curriculum and provide bespoke sessions for science weeks and eco schools.

Choose from whole days, half days and one off sessions.

When you book a workshop with us, we will tailor the event to meet your needs and provide the following:

- Risk Assessments
- Lesson Plans
- Links to the curriculum
- Resources/ equipment
- Expertise in the subject
- Links to wildlife and local natural spaces

Prices

Requested donations:

1 to 1.5 hour session	from £90 (one class)
Half day	from £140 (up to two classes)
One day	from £240 (up to three classes)

The price includes one leader, travel expenses, equipment and materials.
Extra cost for willow/logs/plants etc. if we source them for wildlife areas.

For bookings and further information contact:
Outdoor Learning Manager: learnoutdoors@essexwt.org.uk 01621862992

[See here](#) to return to grounds development menu

