



“Being part of the hedgerow survey team has made rambling much more interesting! It is great to know that by taking a survey form out on walks we can make an important contribution to conserving species such as the hazel dormouse.”

Brian Arbon, Retired manager



“Taking part in RIVERSEARCH surveying has given me the opportunity to learn about local wildlife whilst having fun and contributing to conservation at the same time! I’m looking forward to continuing volunteering in the future.”

Joanne Vere, NHS worker

Details of all our surveys can be provided by contacting the Trust’s Biological Records Officer Lorna Shaw, at the address below or by visiting our website:

www.essexwt.org.uk



Lorna Shaw
Essex Wildlife Trust
Abbotts Hall Farm
Great Wigborough
Colchester
Essex CO5 7RZ

Email: lornas@essexwt.org.uk
Telephone: 01621 862999
Website: www.essexwt.org.uk



Registered Charity No. 210065

Join the Essex Wildlife Trust survey team – and help protect your county’s wildlife



Surveys take place all over Essex and anyone can get involved – many surveys do not require specialist knowledge, training and equipment will be provided where necessary.

Contact us on **01621 862999** for details or email lornas@essexwt.org.uk

6184

In order to protect a Living Landscape, we must first know what is there...

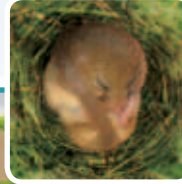
RIVERSEARCH







Riversearch is an established survey programme that monitors the usage of Essex rivers by water voles, otters and other species. Otters are recovering well in Essex after virtually disappearing in the 1980's, and a water vole translocation programme is also underway. In addition the first survey of water shrews in Essex will be taking place in 2011. Contact us for an information pack or to attend a training day.



HEDGEROWS

Hedgerows are nationally important habitats for over 50 species of conservation concern, and provide connections between other landscape features. Essex Wildlife Trust is surveying hedgerows in the county using a standard technique, to assess their condition and aid the management of hedgerows for conservation. Contact us for details.



-  No specialist knowledge required (training provided)
-   Some species knowledge needed (training provided)
-    Specialist knowledge or equipment needed (training and equipment provided)

SPECIES SURVEYS

Mosaics of different habitats allow mobile species such as bats and birds to thrive. Monitoring these highly visible species can provide hints as to where patches of good habitat exist. Join our staff and volunteers to learn more about how standard surveys can inform conservation decisions.



WOODLANDS, GRASSLANDS and PONDS

These are important habitats for wildlife. However, without continuous monitoring and management their condition can decline and species diversity is lost. Essex Wildlife Trust has developed simple, rapid surveys that indicate habitat condition and provide a basis for more detailed surveys. Help us by taking a survey form with you next time you go for a walk.



SHORESEARCH

Shoresearch is an Essex Wildlife Trust initiative to monitor and record marine animals and plants. Essex has one of the longest coastlines in Britain, and is home to a broad range of species if you know where to look! Collecting evidence of the species present in our estuaries will help to designate new areas of conservation importance along the Essex coast. Those of you new to marine identification will have the opportunity to learn from experienced leaders in a relaxed and informal setting.



REPORT A SIGHTING

Do you know of any birds, mammals, veteran trees or interesting plants in your area? Contact us for a recording form, or email records@essexwt.org.uk with details of **WHAT** you saw, **WHERE** you saw it (a grid reference is useful), **WHO** saw it and **WHEN**. Send us a photo if you have one – if you are unsure we can help identify the species.

To find out how you can get involved contact the Biological Records Officer, Lorna Shaw at lornas@essexwt.org.uk