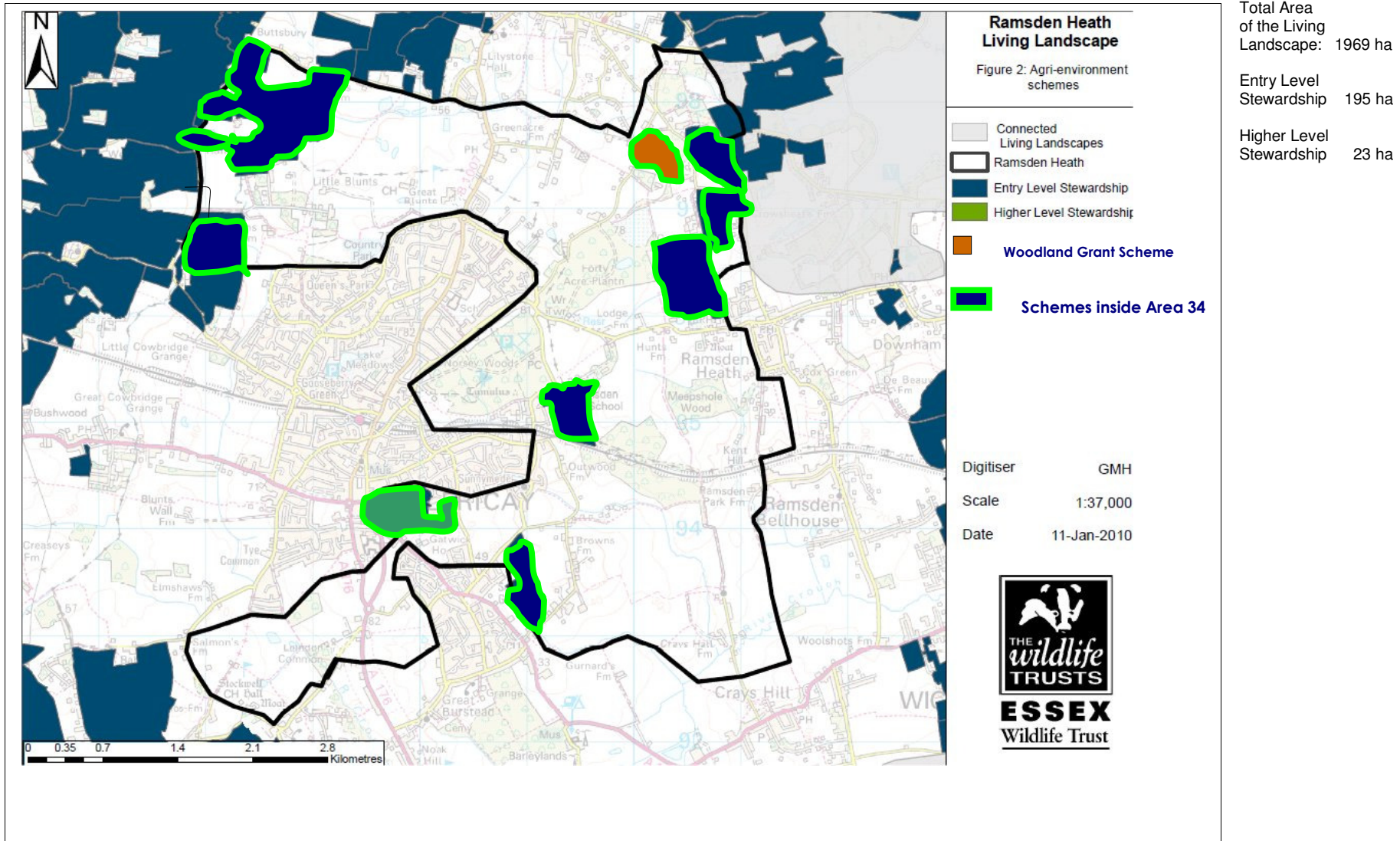
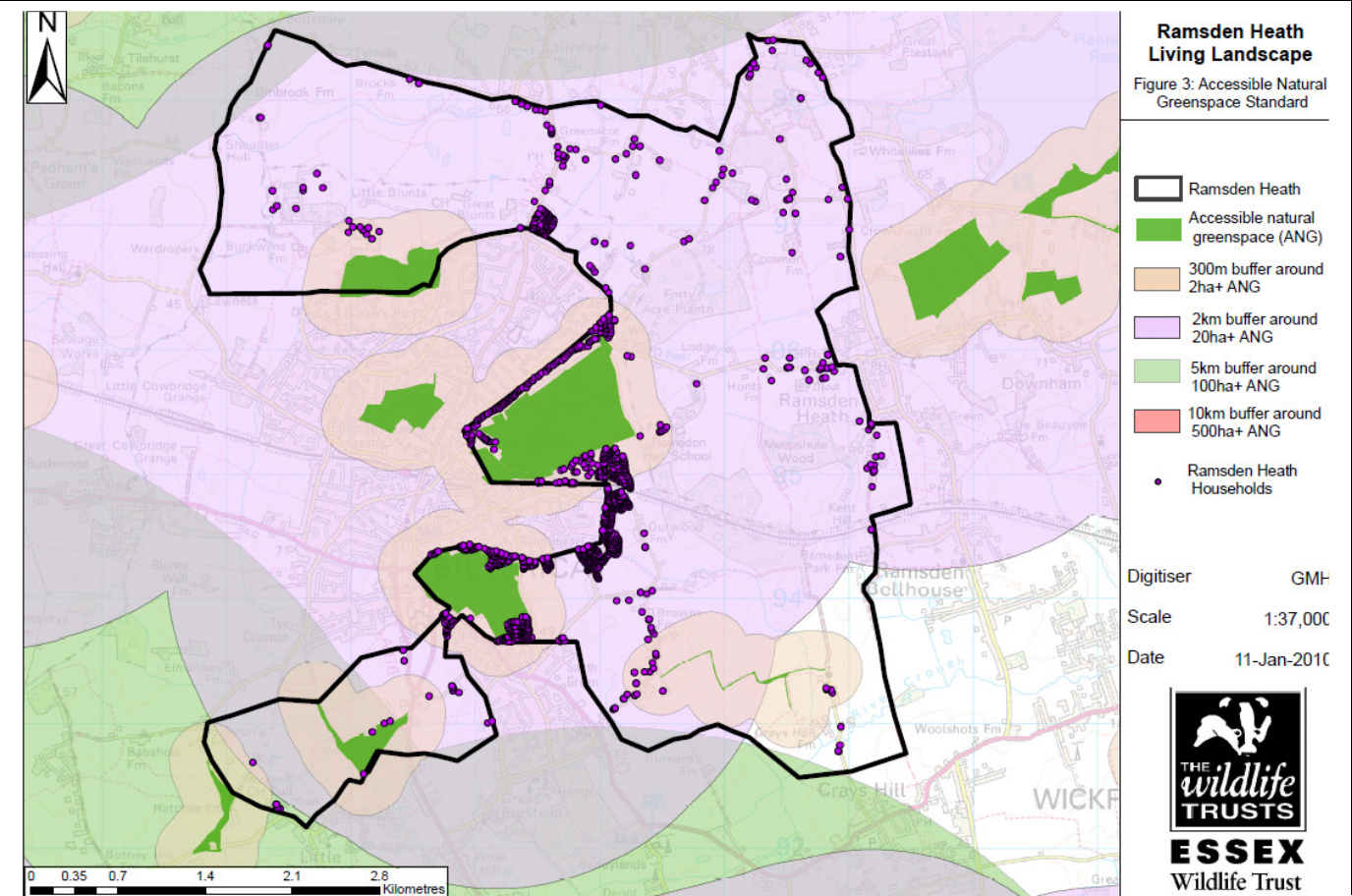


**Map 3: Current Agri-environmental schemes**



**Map 4: Accessible Natural Greenspace Standards (ANGSt)**



## Appendix B – Local Wildlife Sites

### Section

1	<p><b>BA18 Mill Meadows:</b> unimproved grassland <a href="http://www.millmeadows.org.uk">www.millmeadows.org.uk</a>,</p> <p><b>BA28 Barrenleys Wood:</b> ancient woodland, predominantly oak, but also ash, and containing some veteran trees. A management plan will be drawn-up with the aim of taking the site into positive conservation management.</p> <p><b>BA51. Barrenleys Meadow:</b> The grassland community contains some of the species typical of acidic grasslands in Essex</p>
2	<p><b>CH58 Crays/Devils Wood:</b> ancient woodland, a higher proportion of sweet chestnut</p> <p><b>CH64 Meepshole Wood:</b> ancient woodland, west side predominantly sweet chestnut. <i>(Access is being requested to obtain more information)</i></p>
3	<p><b>CH52 Forty Acre Plantation:</b> A mix of commercially-coppiced and ancient woodland, also incorporating fishing lakes, a good scrub area and a new plantation.</p> <p><b>CH59 Great Bishops/Broom Wood,</b> sweet chestnut formerly coppiced. Also oak-dominant mixed deciduous woodland along the roadside. <i>(more information needed)</i></p> <p><b>CH63 Little Bishops/Kiln Common:</b> former sweet chestnut coppicing with a plantation of birch, and areas with a mix of oak, hornbeam, hazel and a few alder.</p>
4	<p><b>BA20 Norsey Meadow,</b> small area of unimproved grassland</p>
4	<p><b>BA17 Queens Park CP:</b> a large area of meadow with islands of trees, mature hedgerows, an area of rough grass with scrub and a newly-planted woodland.</p> <p><b>BA10 Queens Park Meadow:</b> a low-lying cattle-grazed meadow, including a pond.</p> <p><b>BA13 Buckwyn's Wood.</b> A small area of deciduous woodland</p> <p>Collectively the above form a diverse habitat: meadow, plantation, scrub, small woodlands, pasture and hedgerows with a pond and boggy area.</p>
5	<p><b>BA12 Frith Wood,</b> a small managed area of ancient woodland within which coppicing is practised, allowing for a varied and species rich flora</p> <p><b>BA14 Laindon Common</b> has acid grassland (managed), ancient woodland and scrub.</p> <p>The two sites are linked by an important corridor of woodland adjoining Burstead Golf Course.</p> <p><b>Ba9. The Wilderness</b> a small Hornbeam/Oak wood with a pond containing aquatic and marginal species.</p> <p><b>Ba16. Little Burstead Woods:</b> an unusual chain of three wet woodlands along the course of the infant River Crouch, in a small valley. Includes Hornbeam, Ash, Oak, Hazel, Field Maple and a varied ground flora including Wood Melick and Wood Millet</p>
7	<p><b>CH 42 Stock Brook Meadow</b> a small damp species-rich meadow containing a variety of grasses and herbs</p>

## Appendix C – Glossary and abbreviations

Abbreviation	Name or term	Notes
BDC	Basildon District Council	
BTO	British Trust for Ornithology	
CBC	Chelmsford Borough Council	
CLA	Countryside and Landowners Association	the membership organisation for owners of land, property and businesses in rural England and Wales
eBAP	Essex Biodiversity Action Plan	specific and focused objectives concentrating on protecting those species and habitats that are confined to, or are characteristic of Essex, as well as those that have declined regionally, nationally or globally. <a href="http://www.essexbiodiversity.org.uk/Default.aspx?pageid=47">http://www.essexbiodiversity.org.uk/Default.aspx?pageid=47</a>
ECC	Essex County Council	<a href="http://www.essexcc.gov.uk">http://www.essexcc.gov.uk</a>
ES	Environmental Stewardship (Scheme)	an agri-environment scheme that provides funding to farmers and other land managers in England who deliver effective environmental management on their land.
FoQP	Friends of Queens Park	The society of local volunteers that supports BDC in the management and promotion of Queens Park Country Park.
FWAG	Farming and Wildlife Advisory Group	A national charity that helps farmers and others who manage the countryside to protect native wildlife for future generations
LL34	Living Landscape Area 34	The area under study
LNR	Local Nature Reserve	places with wildlife or geological features that are of special interest locally <a href="http://www.english-nature.org.uk/Special/lnr/office.htm">http://www.english-nature.org.uk/Special/lnr/office.htm</a>
LoWS	Local Wildlife Sites	Areas of land with significant wildlife value. In reality they are typically an area of ancient woodland, a flower-rich hay meadow or a village pond. <a href="http://www.essexbiodiversity.org.uk/localwildlifesites.aspx">http://www.essexbiodiversity.org.uk/localwildlifesites.aspx</a>
MMS	Mill Meadows Society	The society of local volunteers that supports BDC in the management and promotion of Mill Meadows. <a href="http://www.millmeadows.org.uk">www.millmeadows.org.uk</a>
NFU	National Farmers Union	
NWS	Norsey Wood Society	The society of local volunteers that supports BDC in the management and promotion of Norsey Wood. <a href="http://www.norseywood.org.uk/">http://www.norseywood.org.uk/</a>
PCM	Positive Conservation Management	Maintaining, restoring or enhancing the wildlife species on site for which it has been designated. For example, managing a meadow to encourage the rare plant species it supports
RoWIP	Rights of Way Improvement Plan	a 10 year plan for improving the provision of access to the countryside through rights of way. Every County Council, including Essex, has a legal duty to produce a RoWIP.
SSSI	Site of Special Scientific Interest	Special wildlife and geological sites <a href="http://www.sssi.naturalengland.org.uk/Special/ssi/index.cfm">http://www.sssi.naturalengland.org.uk/Special/ssi/index.cfm</a>